

















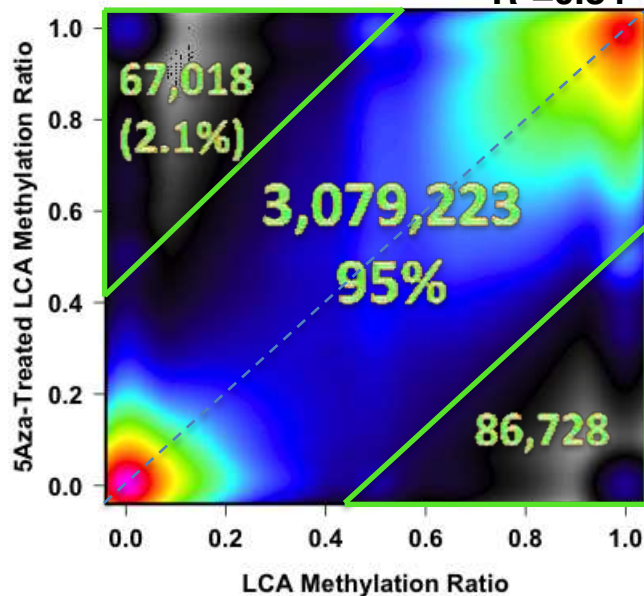






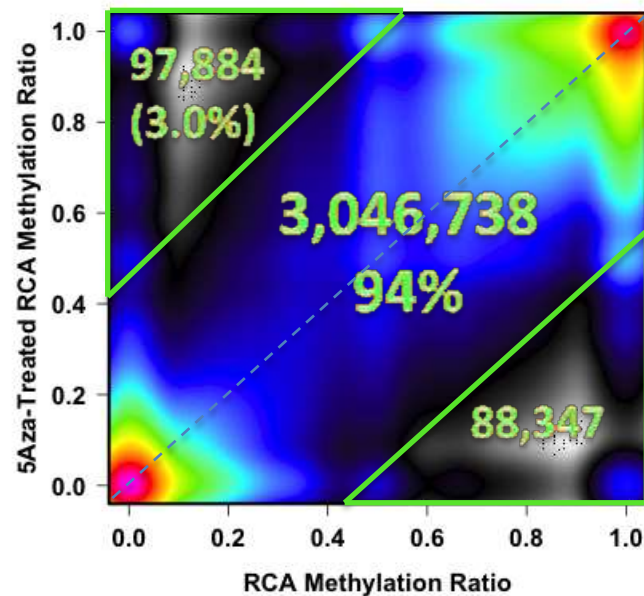
### B. LCA v Aza-LCA

$R^2=0.84$



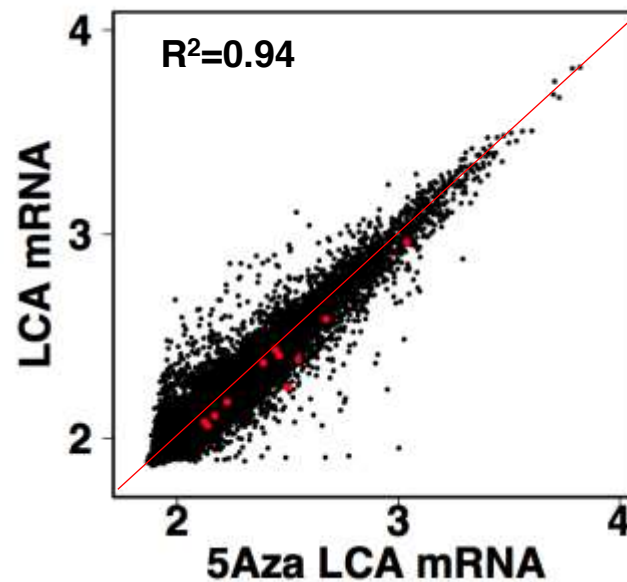
### C. RCA v Aza-RCA

$R^2=0.81$



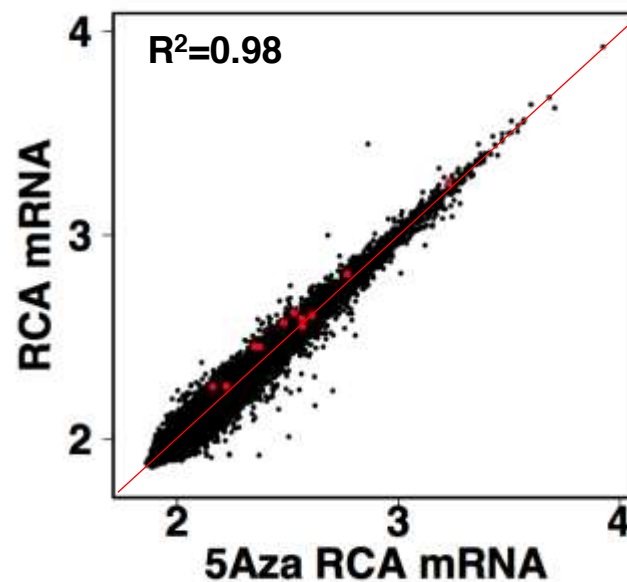
### D. LCA v Aza-LCA

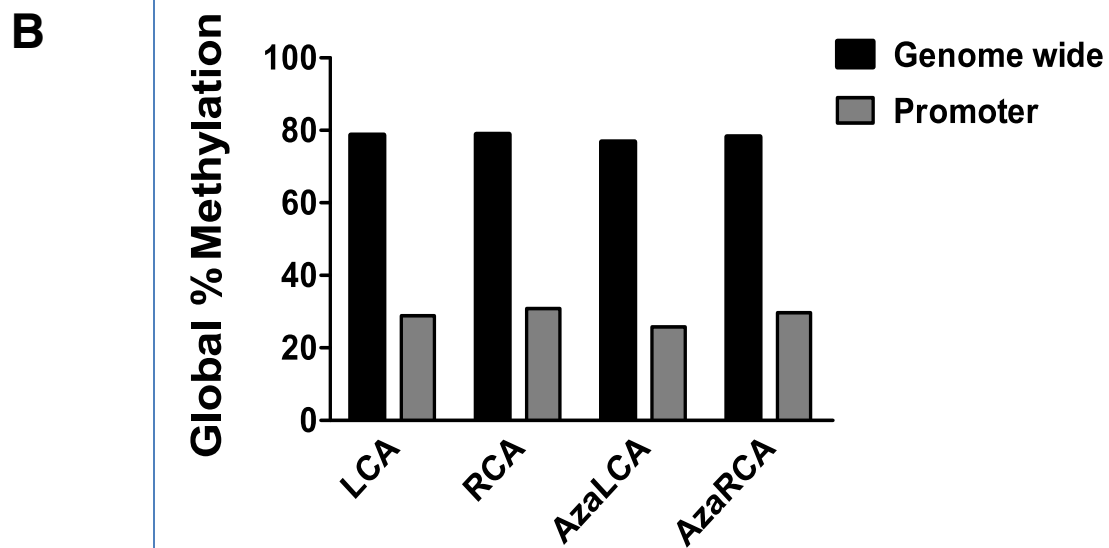
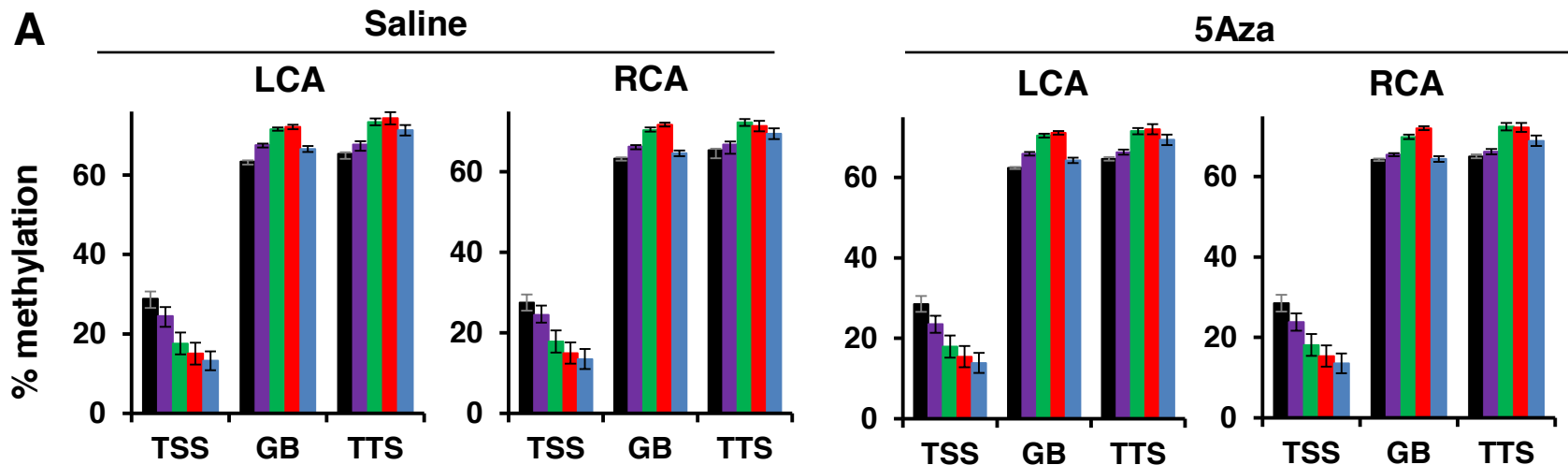
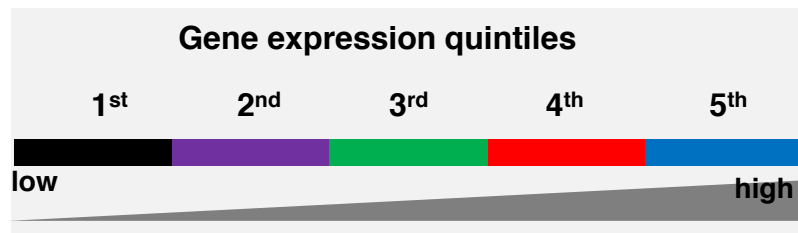
$R^2=0.94$

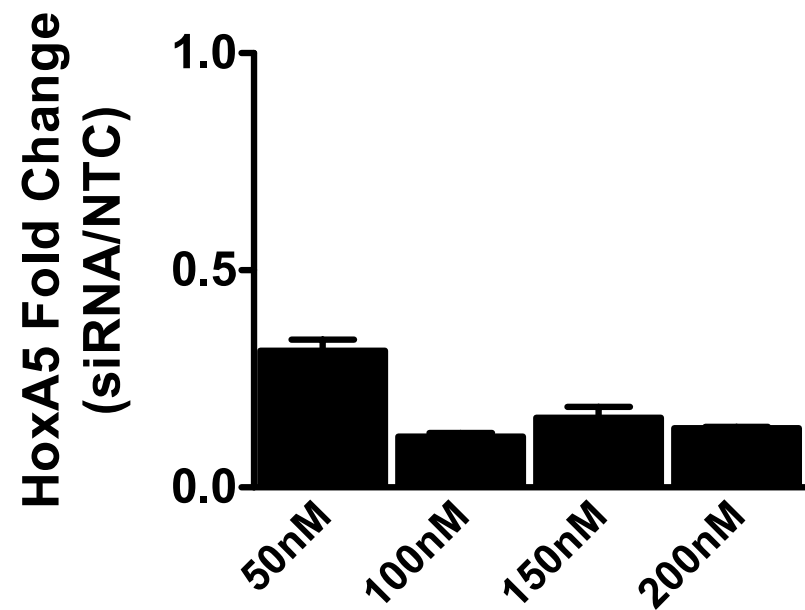
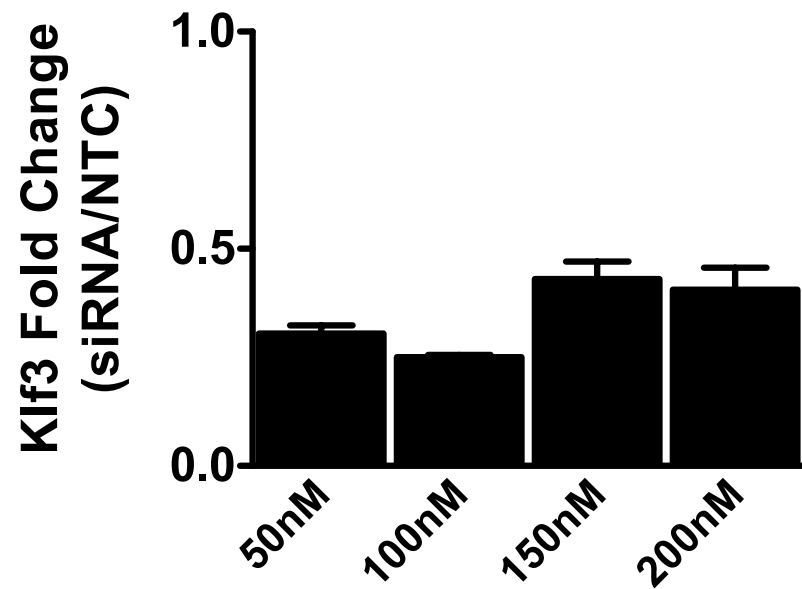


### E. RCA v Aza-RCA

$R^2=0.98$





**A****B**

|                      | <b>Dataset</b>      | <b>Total CGs</b> | <b>CGs in Promoters</b> |
|----------------------|---------------------|------------------|-------------------------|
|                      | Mm9 Genome Assembly | 21,342,492       | 2,130,470               |
| <b>RRBS Datasets</b> | LCA                 | 4,923,836        | 1,124,726               |
|                      | RCA                 | 4,584,088        | 1,068,670               |
|                      | Aza-LCA             | 5,308,692        | 1,156,804               |
|                      | Aza-RCA             | 5,054,246        | 1,153,786               |
|                      | Average             | 4,967,716        | 1,125,997               |

|                             | <b>Forward</b>                 | <b>Reverse</b>                 |
|-----------------------------|--------------------------------|--------------------------------|
| <b>DNMT1 ( mouse)</b>       | AAGGGGGGCCCTGACCGCTTC          | CCGAAATGCCTGGGCTGCCG           |
| <b>DNMT1 (human)</b>        | TGCCAGCTGAGCGTGGTGGT           | GCATGCGGGCAGCCACCAAT           |
| <b>DNMT3a (mouse)</b>       | GAGGGAACTGAGACCCAC             | CTGGAAGGTGAGTCTTGGCA           |
| <b>DNMT3b (mouse)</b>       | CGCACAACCAATGACTCTGCTG         | GGTGACTTCAGAAGCCATCCGT         |
| <b>HoxA5 (mouse)</b>        | CGCAAGCTGCACATTAGTCACG         | GAGAGGCAAAGGGCATGAGCTA         |
| <b>HoxA5 (human)</b>        | GCGCAAGCTGCACATAAG             | CGGTTGAAGTGGAACCTCTT           |
| <b>Klf3 (mouse)</b>         | CCTCTCATGGTTTCCTTGTCGG         | CCTCTGTGGTTCAATTCCAGGC         |
| <b>Klf3 (human)</b>         | CTCATGGTCTCCTTATCGGAGG         | TGTCCTCTGTGGTTCGATCCCA         |
| <b>HoxA5 BS-Seq (mouse)</b> | GAATTGAGGTTATAGTTTATTATGGTAAAA | AATTATTATAAATAATTCTAAATCACCACC |

Suppl. Table 2